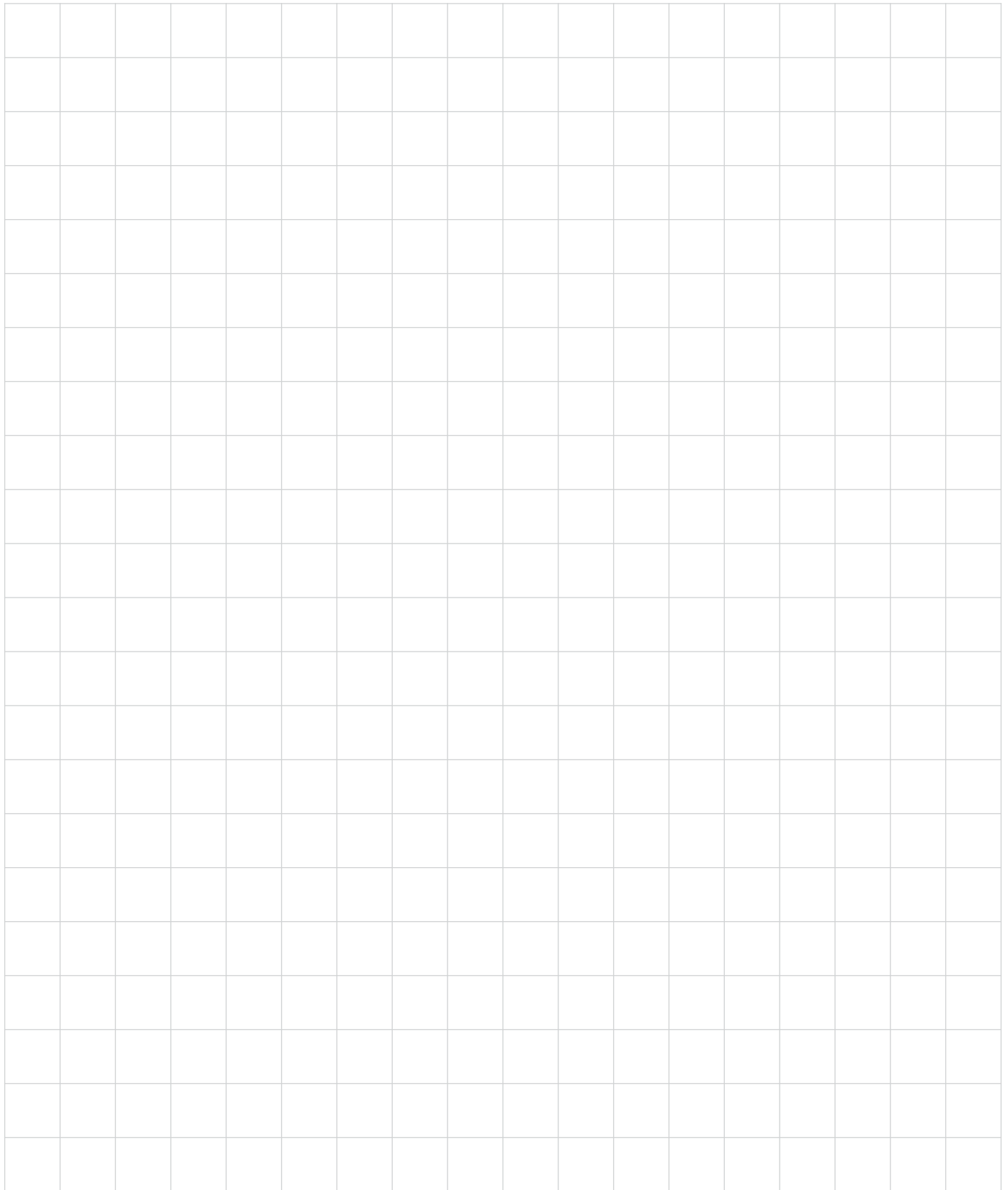


# Racores

Conectores neumáticos en diferentes materiales para las aplicaciones neumáticas:

- ∨ Metálicos (Bronce)
- ∨ Acero Inoxidable
- ∨ Plásticos (PBT)





**Racores Metálicos**

Racores Metálicos En Pulgadas (Rosca NPT) **Racores-274**

**Serie RM** (10/32", 1/8", 1/4", 3/8", 1/2") **Racores-275**

Racores Metálicos Milimétricos (Rosca G)

**Serie RM** (M5, 1/8", 1/4", 3/8", 1/2") **Racores-277**



**Racores En Acero Inoxidable 304**

Racores Inoxidables En Pulgadas (Rosca NPT)

**Serie RI** (1/8", 1/4", 3/8", 1/2") **Racores-280**

Racores Inoxidables Milimétricos (Rosca G)

**Serie RI** (M5, 1/8", 1/4", 3/8", 1/2") **Racores-281**



**Racores Plásticos**

Racores Plásticos En Pulgadas (Rosca NPT)

**Serie RP** (10/32", 1/8", 1/4", 3/8", 1/2") **Racores-283**

Racores Plásticos Milimétricos (Rosca G)

**Serie RP** (M5, 1/8", 1/4", 3/8", 1/2") **Racores-288**

Racores Plásticos Milimétricos (Rosca PT)

**Serie RP** (1/8", 1/4", 3/8", 1/2") **Racores-294**



**Racores Especiales**

Racores Plásticos Two-Touch (Rosca R)

**Serie RRP** (1/8", 1/4", 3/8", 1/2") **Racores-295**

Racores Con Detención - Tipo Acople Rápido

**Serie RD** (1/8", 1/4", 3/8") **Racores-296**



**Controles De Flujo Montaje Directo**

Control De Flujo Con Cheque Incorporado

**Serie RPC** (Milimétrico) **Racores-297**

Control De Flujo Montaje Directo

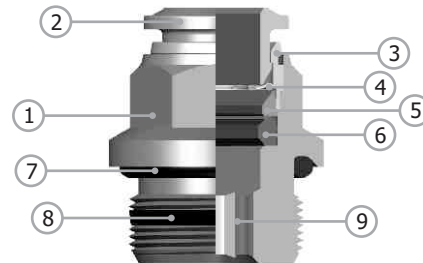
**Serie RP** **Racores-298**

Control De Flujo Montaje Directo

**Serie RM** **Racores-299**

### Características

- Todas las roscas están fabricadas con junta de cierre que permiten un montaje rápido y sencillo de los circuitos neumáticos
- Excelente sujeción de las mangueras
- Racores rectos con hexágono interno que permite el montaje en espacios reducidos
- Seguros y resistentes a la corrosión



### Materiales y Componentes

| Item | Parte                | Material             |
|------|----------------------|----------------------|
| 1    | Cuerpo               | Bronce Niquelado     |
| 2    | Anillo Colector      | Bronce Niquelado     |
| 3    | Capsula              | Bronce Niquelado     |
| 4    | Anillo de Sujeción   | Acero Inoxidable 304 |
| 5    | Anillo de Seguridad  | Tecnopolímero        |
| 6    | Anillo de Labio      | NBR                  |
| 7    | O-ring (Roscas G)    | NBR                  |
| 8    | Empaque (Roscas NPT) | NBR                  |
| 9    | Hexágono Interno     |                      |

### Datos Técnicos

Fluido:  
Aire comprimido y vacío

Presión de Trabajo:  
-1 a 15 Bar ~ -14,7 a 217 PSI

Temperatura de Trabajo:  
-20°C a 80°C ~ -4°F a 176°F

Roscas:  
Pulgadas - NPT  
Milimétricos - G



El anillo de sujeción en acero inoxidable asegura el perfecto agarre de la manguera sin dañar la superficie

La conexión entre la manguera y el racor aseguran el agarre en condiciones extremas de impacto y vibración.

La forma geométrica de la junta asegura la estanqueidad para uso con vacío.

# RACORES METALICOS - EN PULGADAS

SERIE RM 10/32 - 1/8 - 1/4 - 3/8 - 1/2 NPT

Art



Racor Recto

| Referencia | NPT    | OD    |
|------------|--------|-------|
| RM102M502  | 10/32" | 1/4"  |
| RM1020101  | 1/8"   | 1/8"  |
| RM1020102  | 1/8"   | 1/4"  |
| RM1020202  | 1/4"   | 1/4"  |
| RM1020209  | 1/4"   | 5/16" |
| RM1020203  | 1/4"   | 3/8"  |
| RM1020302  | 3/8"   | 1/4"  |
| RM1020303  | 3/8"   | 3/8"  |
| RM1020304  | 3/8"   | 1/2"  |
| RM1020403  | 1/2"   | 3/8"  |
| RM1020404  | 1/2"   | 1/2"  |



Racor Codo - Giratorio

| Referencia | NPT    | OD    |
|------------|--------|-------|
| RM104M502  | 10/32" | 1/4"  |
| RM1040101  | 1/8"   | 1/8"  |
| RM1040102  | 1/8"   | 1/4"  |
| RM1040202  | 1/4"   | 1/4"  |
| RM1040209  | 1/4"   | 5/16" |
| RM1040203  | 1/4"   | 3/8"  |
| RM1040302  | 3/8"   | 1/4"  |
| RM1040303  | 3/8"   | 3/8"  |
| RM1040304  | 3/8"   | 1/2"  |
| RM1040403  | 1/2"   | 3/8"  |
| RM1040404  | 1/2"   | 1/2"  |



Racor Tee Vertical - Giratorio

| Referencia | NPT  | OD   |
|------------|------|------|
| RM1080102  | 1/8" | 1/4" |
| RM1080202  | 1/4" | 1/4" |
| RM1080303  | 3/8" | 3/8" |
| RM1080404  | 1/2" | 1/2" |



Racor Tee Horizontal - Giratorio

| Referencia | NPT  | OD    |
|------------|------|-------|
| RM1090202  | 1/4" | 1/4"  |
| RM1090209  | 1/4" | 5/16" |
| RM1090404  | 1/2" | 1/2"  |

RACORES

# RACORES METALICOS - EN PULGADAS

SERIE RM 10/32 - 1/8 - 1/4 - 3/8 - 1/2 NPT

Art



### Unión Recta

| Referencia | OD   |
|------------|------|
| RM11102    | 1/4" |
| RM11103    | 3/8" |
| RM11104    | 1/2" |



### Unión Codo

| Referencia | OD   |
|------------|------|
| RM11202    | 1/4" |
| RM11203    | 3/8" |
| RM11204    | 1/2" |



### Unión Tee

| Referencia | OD   |
|------------|------|
| RM11302    | 1/4" |
| RM11303    | 3/8" |
| RM11304    | 1/2" |



### Unión Pasamuro

| Referencia | OD   |
|------------|------|
| RM11602    | 1/4" |
| RM11603    | 3/8" |



### Reducción

| Referencia | Conexión ID | OD    |
|------------|-------------|-------|
| RM1200302  | 3/8         | 1/4"  |
| RM1200309  | 3/8         | 5/16" |
| RM1200403  | 1/2         | 3/8"  |

# RACORES METALICOS - MILIMETRICOS

SERIE RM M5 - 1/8 - 1/4 - 3/8 - 1/2 ROSCA G

Art



Racor Recto

| Referencia | G    | OD |
|------------|------|----|
| RM202M504  | M5   | 4  |
| RM202M506  | M5   | 6  |
| RM2020104  | 1/8" | 4  |
| RM2020106  | 1/8" | 6  |
| RM2020108  | 1/8" | 8  |
| RM2020204  | 1/4" | 4  |
| RM2020206  | 1/4" | 6  |
| RM2020208  | 1/4" | 8  |
| RM2020210  | 1/4" | 10 |
| RM2020308  | 3/8" | 8  |
| RM2020310  | 3/8" | 10 |
| RM2020312  | 3/8" | 12 |
| RM2020410  | 1/2" | 10 |
| RM2020412  | 1/2" | 12 |



Racor Codo - Giratorio

| Referencia | G    | OD |
|------------|------|----|
| RM204M504  | M5   | 4  |
| RM2040104  | 1/8" | 4  |
| RM2040106  | 1/8" | 6  |
| RM2040108  | 1/8" | 8  |
| RM2040204  | 1/4" | 4  |
| RM2040206  | 1/4" | 6  |
| RM2040208  | 1/4" | 8  |
| RM2040210  | 1/4" | 10 |
| RM2040308  | 3/8" | 8  |
| RM2040310  | 3/8" | 10 |
| RM2040312  | 3/8" | 12 |
| RM2040410  | 1/2" | 10 |
| RM2040412  | 1/2" | 12 |



Racor Tee Vertical - Giratorio

| Referencia | G    | OD |
|------------|------|----|
| RM2080106  | 1/8" | 6  |
| RM2080206  | 1/4" | 6  |
| RM2080208  | 1/4" | 8  |



Racor Tee Horizontal - Giratorio

| Referencia | G    | OD |
|------------|------|----|
| RM2090106  | 1/8" | 6  |
| RM2090206  | 1/4" | 6  |
| RM2090208  | 1/4" | 8  |

RACORES

# RACORES METALICOS - MILIMETRICOS

SERIE RM M5 - 1/8 - 1/4 - 3/8 - 1/2 ROSCA G

Art



## Unión Recta

| Referencia | OD |
|------------|----|
| RM21104    | 4  |
| RM21106    | 6  |
| RM21108    | 8  |
| RM21110    | 10 |
| RM21112    | 12 |



## Unión Codo

| Referencia | OD |
|------------|----|
| RM21204    | 4  |
| RM21206    | 6  |
| RM21208    | 8  |
| RM21210    | 10 |
| RM21212    | 12 |



## Unión Tee

| Referencia | OD |
|------------|----|
| RM21304    | 4  |
| RM21306    | 6  |
| RM21308    | 8  |
| RM21310    | 10 |
| RM21312    | 12 |



## Unión Pasamuro

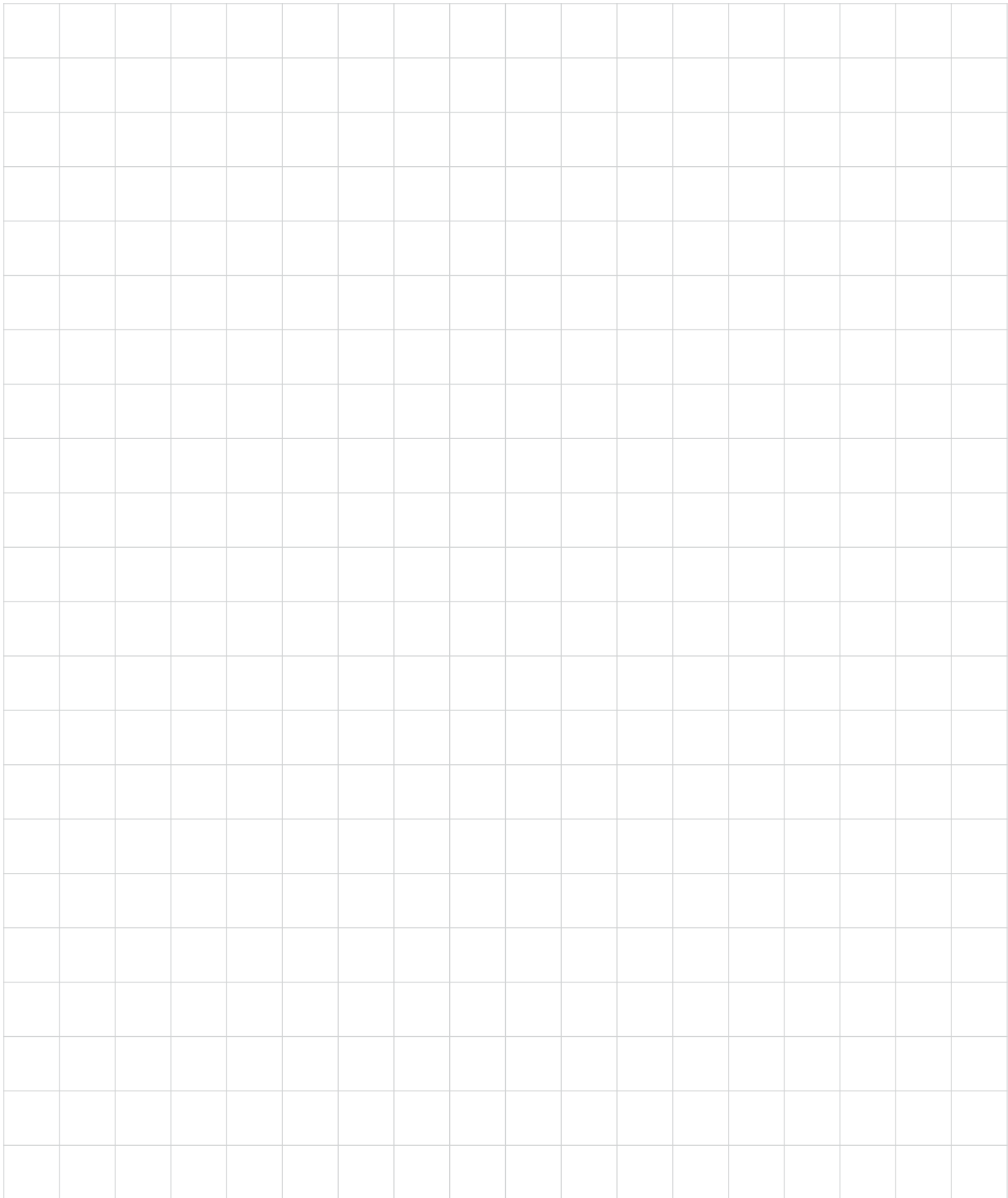
| Referencia | OD |
|------------|----|
| RM21606    | 6  |
| RM21608    | 8  |
| RM21610    | 10 |



## Reducción

| Referencia | Conexión ID | OD |
|------------|-------------|----|
| RM2200604  | 6           | 4  |
| RM2200806  | 8           | 6  |
| RM2201008  | 10          | 8  |





## RACORES EN ACERO INOXIDABLE 304 - EN PULGADAS

SERIE RI 1/8 - 1/4 - 3/8 - 1/2 NPT

Art



Racor Recto- Inox. 304

| Referencia | NPT  | OD    |
|------------|------|-------|
| RI1020102  | 1/8" | 1/4"  |
| RI1020202  | 1/4" | 1/4"  |
| RI1020209  | 1/4" | 5/16" |
| RI1020203  | 1/4" | 3/8"  |
| RI1020303  | 3/8" | 3/8"  |
| RI1020304  | 3/8" | 1/2"  |
| RI1020404  | 1/2" | 1/2"  |



Racor Codo - Giratorio - Inox. 304

| Referencia | NPT  | OD    |
|------------|------|-------|
| RI1040102  | 1/8" | 1/4"  |
| RI1040202  | 1/4" | 1/4"  |
| RI1040209  | 1/4" | 5/16" |
| RI1040203  | 1/4" | 3/8"  |
| RI1040303  | 3/8" | 3/8"  |
| RI1040304  | 3/8" | 1/2"  |
| RI1040404  | 1/2" | 1/2"  |



Racor Tee Horizontal - Giratorio - Inox. 304

| Referencia | NPT  | OD    |
|------------|------|-------|
| RI1090102  | 1/8" | 1/4"  |
| RI1090202  | 1/4" | 1/4"  |
| RI1090209  | 1/4" | 5/16" |
| RI1090303  | 3/8" | 3/8"  |
| RI1090404  | 1/2" | 1/2"  |

# RACORES EN ACERO INOXIDABLE 304 - MILIMETRICOS

SERIE RI M5 - 1/8" - 1/4" - 3/8" - 1/2" ROSCA G

Art



Racor Recto- Inox. 304

| Referencia | G    | OD |
|------------|------|----|
| RI202M504  | M5   | 4  |
| RI2020104  | 1/8" | 4  |
| RI2020106  | 1/8" | 6  |
| RI2020108  | 1/8" | 8  |
| RI2020204  | 1/4" | 4  |
| RI2020206  | 1/4" | 6  |
| RI2020208  | 1/4" | 8  |
| RI2020210  | 1/4" | 10 |
| RI2020310  | 3/8" | 10 |
| RI2020312  | 3/8" | 12 |
| RI2020412  | 1/2" | 12 |



Racor Codo - Giratorio - Inox. 304

| Referencia | G    | OD |
|------------|------|----|
| RI204M504  | M5   | 4  |
| RI2040104  | 1/8" | 4  |
| RI2040106  | 1/8" | 6  |
| RI2040108  | 1/8" | 8  |
| RI2040204  | 1/4" | 4  |
| RI2040206  | 1/4" | 6  |
| RI2040208  | 1/4" | 8  |
| RI2040210  | 1/4" | 10 |
| RI2040310  | 3/8" | 10 |
| RI2040312  | 3/8" | 12 |
| RI2040412  | 1/2" | 12 |



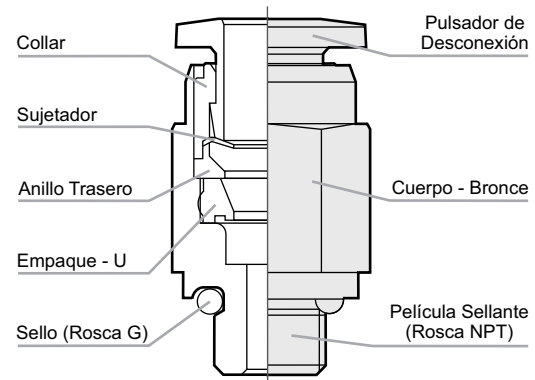
Racor Tee Horizontal - Giratorio - Inox. 304

| Referencia | G    | OD |
|------------|------|----|
| RI2090106  | 1/8" | 6  |
| RI2090206  | 1/4" | 6  |
| RI2090208  | 1/4" | 8  |

RACORES

### Características

- Permiten un montaje rápido y sencillo de los circuitos neumáticos
- Excelente sujeción de las mangueras
- Racores rectos con hexágono interno que permite el montaje en espacios reducidos
- Satisfacen las características de anti-contaminación



### Datos Técnicos

Fluido:  
Aire comprimido y vacío

Presión de Trabajo:  
-1 a 10 Bar ~ -14,7 a 150 PSI

Temperatura de Trabajo:  
0°C a 60°C ~ 32°F a 140°F

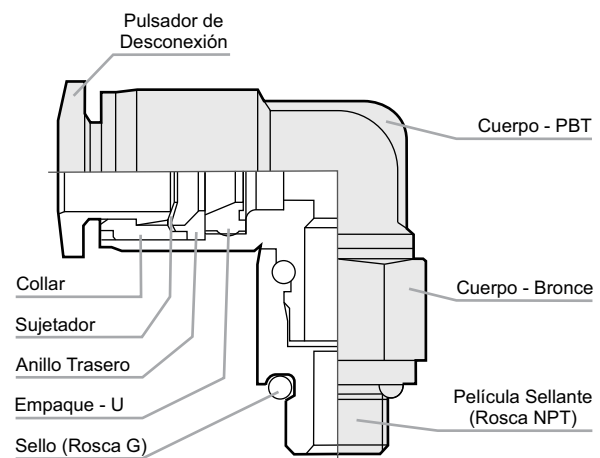
Roscas:  
Pulgadas - NPT  
Milimétricos - G

### Materiales

Cuerpo : PBT  
(Politereftalato de Butileno)

Roscas : Bronce Niquelado

Empaques : NBR



# RACORES PLASTICOS - EN PULGADAS

SERIE RP 10/32 - 1/8 - 1/4 - 3/8 - 1/2 NPT

Art



Racor Recto

| Referencia | NPT    | OD    |
|------------|--------|-------|
| RP102M502  | 10/32" | 1/4"  |
| RP1020101  | 1/8"   | 1/8"  |
| RP1020102  | 1/8"   | 1/4"  |
| RP1020103  | 1/8"   | 3/8"  |
| RP1020109  | 1/8"   | 5/16" |
| RP1020202  | 1/4"   | 1/4"  |
| RP1020209  | 1/4"   | 5/16" |
| RP1020203  | 1/4"   | 3/8"  |
| RP1020204  | 1/4"   | 1/2"  |
| RP1020302  | 3/8"   | 1/4"  |
| RP1020309  | 3/8"   | 5/16" |
| RP1020303  | 3/8"   | 3/8"  |
| RP1020304  | 3/8"   | 1/2"  |
| RP1020402  | 1/2"   | 1/4"  |
| RP1020409  | 1/2"   | 5/16" |
| RP1020403  | 1/2"   | 3/8"  |
| RP1020404  | 1/2"   | 1/2"  |



Racor Codo - Giratorio

| Referencia | NPT    | OD    |
|------------|--------|-------|
| RP104M502  | 10/32" | 1/4"  |
| RP1040101  | 1/8"   | 1/8"  |
| RP1040102  | 1/8"   | 1/4"  |
| RP1040103  | 1/8"   | 3/8"  |
| RP1040109  | 1/8"   | 5/16" |
| RP1040202  | 1/4"   | 1/4"  |
| RP1040209  | 1/4"   | 5/16" |
| RP1040203  | 1/4"   | 3/8"  |
| RP1040204  | 1/4"   | 1/2"  |
| RP1040302  | 3/8"   | 1/4"  |
| RP1040309  | 3/8"   | 5/16" |
| RP1040303  | 3/8"   | 3/8"  |
| RP1040304  | 3/8"   | 1/2"  |
| RP1040402  | 1/2"   | 1/4"  |
| RP1040409  | 1/2"   | 5/16" |
| RP1040403  | 1/2"   | 3/8"  |
| RP1040404  | 1/2"   | 1/2"  |



Racor Recto Hembra

| Referencia | NPT  | OD   |
|------------|------|------|
| RP1030102  | 1/8" | 1/4" |
| RP1030202  | 1/4" | 1/4" |
| RP1030203  | 1/4" | 3/8" |



Racor Codo Hembra

| Referencia | NPT  | OD    |
|------------|------|-------|
| RP1050102  | 1/8" | 1/4"  |
| RP1050202  | 1/4" | 1/4"  |
| RP1050203  | 1/4" | 3/8"  |
| RP1050209  | 1/8" | 5/16" |

RACORES

# RACORES PLASTICOS - EN PULGADAS

SERIE RP 10/32 - 1/8 - 1/4 - 3/8 - 1/2 NPT

Art



Unión Tee

| Referencia | OD    |
|------------|-------|
| RP11302    | 1/4"  |
| RP11309    | 5/16" |
| RP11303    | 3/8"  |
| RP11304    | 1/2"  |



Racor Yee- Giratorio

| Referencia | NPT  | OD    |
|------------|------|-------|
| RP1100102  | 1/8" | 1/4"  |
| RP1100202  | 1/4" | 1/4"  |
| RP1100209  | 1/4" | 5/16" |
| RP1100303  | 3/8" | 3/8"  |



Unión Recta

| Referencia | OD    |
|------------|-------|
| RP11102    | 1/4"  |
| RP11109    | 5/16" |
| RP11103    | 3/8"  |
| RP11104    | 1/2"  |



Unión Codo

| Referencia | OD    |
|------------|-------|
| RP11202    | 1/4"  |
| RP11209    | 5/16" |
| RP11203    | 3/8"  |
| RP11204    | 1/2"  |



Racor Tee Horizontal- Giratorio

| Referencia | NPT  | OD    |
|------------|------|-------|
| RP1090102  | 1/8" | 1/4"  |
| RP1090202  | 1/4" | 1/4"  |
| RP1090209  | 1/4" | 5/16" |
| RP1090203  | 1/4" | 3/8"  |
| RP1090302  | 3/8" | 1/4"  |
| RP1090303  | 3/8" | 3/8"  |
| RP1090304  | 3/8" | 1/2"  |
| RP1090403  | 1/2" | 3/8"  |
| RP1090404  | 1/2" | 1/2"  |

# RACORES PLASTICOS - EN PULGADAS

SERIE RP 10/32 - 1/8 - 1/4 - 3/8 - 1/2 NPT

Art



Unión Cruz

| Referencia | OD   |
|------------|------|
| RP11502    | 1/4" |
| RP11503    | 3/8" |
| RP11504    | 1/2" |



Unión Yee

| Referencia | OD   |
|------------|------|
| RP11402    | 1/4" |
| RP11403    | 3/8" |
| RP11404    | 1/2" |



Unión Codo Pasamuro

| Referencia | OD   | T       |
|------------|------|---------|
| RP11702    | 1/4" | M14x1.0 |
| RP11703    | 3/8" | M20x1.0 |



Unión Pasamuro

| Referencia | OD    | T       |
|------------|-------|---------|
| RP11602    | 1/4"  | M14x1.0 |
| RP11609    | 5/16" | M16x1.0 |
| RP11603    | 3/8"  | M20x1.0 |
| RP11604    | 1/2"  | M22x1.0 |

RACORES

# RACORES PLASTICOS - EN PULGADAS

SERIE RP 10/32 - 1/8 - 1/4 - 3/8 - 1/2 NPT

Art



Reducción Manguera

| Referencia | OD 1  | OD 2  |
|------------|-------|-------|
| RP1190902  | 5/16" | 1/4"  |
| RP1190302  | 3/8"  | 1/4"  |
| RP1190309  | 3/8"  | 5/16" |
| RP1190403  | 1/2"  | 3/8"  |



Reducción Para Racor

| Referencia | ID    | OD 2  |
|------------|-------|-------|
| RP1200902  | 5/16" | 1/4"  |
| RP1200302  | 3/8"  | 1/4"  |
| RP1200309  | 3/8"  | 5/16" |
| RP1200402  | 1/2"  | 1/4"  |
| RP1200403  | 1/2"  | 3/8"  |



Tapón Para Racor

| Referencia | OD    |
|------------|-------|
| RP12102    | 1/4"  |
| RP12109    | 5/16" |
| RP12103    | 3/8"  |



Tapón Para Manguera

| Referencia | OD    |
|------------|-------|
| RP12202    | 1/4"  |
| RP12209    | 5/16" |
| RP12203    | 3/8"  |
| RP12204    | 1/2"  |



Manifold- 4 Salidas

| Referencia | NPT  | OD 1  | OD 2  |
|------------|------|-------|-------|
| RP1230209  | 1/4" | 5/16" | 1/4"  |
| RP1230303  | 3/8" | 3/8"  | 5/16" |





# RACORES PLASTICOS - MILIMETRICOS

SERIE RP M5 - 1/8 - 1/4 - 3/8 - 1/2 Rosca G

Art



Racor Recto

| Referencia | G    | OD |
|------------|------|----|
| RP202M504  | M5   | 4  |
| RP202M506  | M5   | 6  |
| RP2020104  | 1/8" | 4  |
| RP2020106  | 1/8" | 6  |
| RP2020108  | 1/8" | 8  |
| RP2020110  | 1/8" | 10 |
| RP2020204  | 1/4" | 4  |
| RP2020206  | 1/4" | 6  |
| RP2020208  | 1/4" | 8  |
| RP2020210  | 1/4" | 10 |
| RP2020212  | 1/4" | 12 |
| RP2020306  | 3/8" | 6  |
| RP2020308  | 3/8" | 8  |
| RP2020310  | 3/8" | 10 |
| RP2020312  | 3/8" | 12 |
| RP2020406  | 1/2" | 6  |
| RP2020408  | 1/2" | 8  |
| RP2020410  | 1/2" | 10 |
| RP2020412  | 1/2" | 12 |
| RP2020416  | 1/2" | 16 |



Racor Codo - Giratorio

| Referencia | G    | OD |
|------------|------|----|
| RP204M504  | M5   | 4  |
| RP204M506  | M5   | 6  |
| RP2040104  | 1/8" | 4  |
| RP2040106  | 1/8" | 6  |
| RP2040108  | 1/8" | 8  |
| RP2040110  | 1/8" | 10 |
| RP2040204  | 1/4" | 4  |
| RP2040206  | 1/4" | 6  |
| RP2040208  | 1/4" | 8  |
| RP2040210  | 1/4" | 10 |
| RP2040212  | 1/4" | 12 |
| RP2040306  | 3/8" | 6  |
| RP2040308  | 3/8" | 8  |
| RP2040310  | 3/8" | 10 |
| RP2040312  | 3/8" | 12 |
| RP2040406  | 1/2" | 6  |
| RP2040408  | 1/2" | 8  |
| RP2040410  | 1/2" | 10 |
| RP2040412  | 1/2" | 12 |
| RP2040416  | 1/2" | 16 |



Racor Recto Hembra

| Referencia | G    | OD |
|------------|------|----|
| RP2030106  | 1/8" | 6  |
| RP2030108  | 1/8" | 8  |
| RP2030206  | 1/4" | 6  |
| RP2030208  | 1/4" | 8  |



Racor Codo Hembra

| Referencia | G    | OD |
|------------|------|----|
| RP2050106  | 1/8" | 6  |
| RP2050108  | 1/8" | 8  |
| RP2050206  | 1/4" | 6  |
| RP2050208  | 1/4" | 8  |

# RACORES PLASTICOS - MILIMETRICOS

SERIE RP M5 - 1/8 - 1/4 - 3/8 - 1/2 Rosca G

Art



Racor Codo Extendido

| Referencia | G    | OD |
|------------|------|----|
| RP2060104  | 1/8" | 4  |
| RP2060106  | 1/8" | 6  |
| RP2060108  | 1/8" | 8  |
| RP2060206  | 1/4" | 6  |
| RP2060208  | 1/4" | 8  |
| RP2060210  | 1/4" | 10 |



Racor Codo Banjo

| Referencia | G    | OD |
|------------|------|----|
| RP2070104  | 1/8" | 4  |
| RP2070106  | 1/8" | 6  |
| RP2070108  | 1/8" | 8  |
| RP2070206  | 1/4" | 6  |
| RP2070208  | 1/4" | 8  |
| RP2070210  | 1/4" | 10 |



Racor Tee Horizontal- Giratorio

| Referencia | G    | OD |
|------------|------|----|
| RP209M504  | M5   | 4  |
| RP209M506  | M5   | 6  |
| RP2090104  | 1/8" | 4  |
| RP2090106  | 1/8" | 6  |
| RP2090108  | 1/8" | 8  |
| RP2090204  | 1/4" | 4  |
| RP2090206  | 1/4" | 6  |
| RP2090208  | 1/4" | 8  |
| RP2090210  | 1/4" | 10 |
| RP2090306  | 3/8" | 6  |
| RP2090308  | 3/8" | 8  |
| RP2090310  | 3/8" | 10 |
| RP2090312  | 3/8" | 12 |
| RP2090410  | 1/2" | 10 |
| RP2090412  | 1/2" | 12 |
| RP2090416  | 1/2" | 16 |



Racor Yee- Giratorio

| Referencia | G    | OD |
|------------|------|----|
| RP2100106  | 1/8" | 6  |
| RP2100206  | 1/4" | 6  |
| RP2100208  | 1/4" | 8  |
| RP2100310  | 3/8" | 10 |

RACORES

# RACORES PLASTICOS - MILIMETRICOS

SERIE RP M5 - 1/8 - 1/4 - 3/8 - 1/2 Rosca G

Art



Unión Recta

| Referencia | OD |
|------------|----|
| RP21104    | 4  |
| RP21106    | 6  |
| RP21108    | 8  |
| RP21110    | 10 |
| RP21112    | 12 |
| RP21116    | 16 |



Unión Codo

| Referencia | OD |
|------------|----|
| RP21204    | 4  |
| RP21206    | 6  |
| RP21208    | 8  |
| RP21210    | 10 |
| RP21212    | 12 |
| RP21216    | 16 |



Unión Tee

| Referencia | OD |
|------------|----|
| RP21304    | 4  |
| RP21306    | 6  |
| RP21308    | 8  |
| RP21310    | 10 |
| RP21312    | 12 |



Unión Yee

| Referencia | OD |
|------------|----|
| RP21404    | 4  |
| RP21406    | 6  |
| RP21408    | 8  |
| RP21410    | 10 |
| RP21412    | 12 |



Unión Cruz

| Referencia | OD |
|------------|----|
| RP21504    | 4  |
| RP21506    | 6  |
| RP21508    | 8  |
| RP21510    | 10 |



Unión Pasamuro

| Referencia | OD | T       |
|------------|----|---------|
| RP21604    | 4  | M12x1.0 |
| RP21606    | 6  | M14x1.0 |
| RP21608    | 8  | M16x1.0 |
| RP21610    | 10 | M20x1.0 |
| RP21612    | 12 | M22x1.0 |

# RACORES PLASTICOS - MILIMETRICOS

SERIE RP M5 - 1/8 - 1/4 - 3/8 - 1/2 Rosca G

Art



Unión Codo Pasamuro

| Referencia | OD | T       |
|------------|----|---------|
| RP21704    | 4  | M12x1.0 |
| RP21706    | 6  | M14x1.0 |
| RP21708    | 8  | M16x1.0 |



Acople Pitorra

| Referencia | OD |
|------------|----|
| RP21806    | 6  |
| RP21808    | 8  |
| RP21810    | 10 |
| RP21812    | 12 |



Reducción Manguera

| Referencia | OD 1 | OD 2 |
|------------|------|------|
| RP2190604  | 6    | 4    |
| RP2190806  | 8    | 6    |
| RP2191006  | 10   | 6    |
| RP2191008  | 10   | 8    |
| RP2191208  | 12   | 8    |
| RP2191210  | 12   | 10   |



Reducción

| Referencia | ID | OD |
|------------|----|----|
| RP2200604  | 6  | 4  |
| RP2200806  | 8  | 6  |
| RP2201006  | 10 | 6  |
| RP2201008  | 10 | 8  |
| RP2201206  | 12 | 6  |
| RP2201208  | 12 | 8  |
| RP2201210  | 12 | 10 |



Tapón Racor

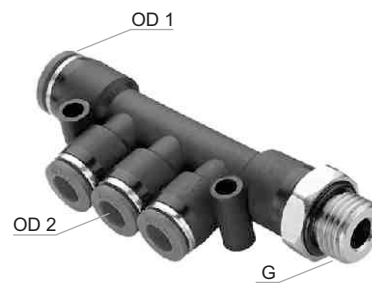
| Referencia | OD |
|------------|----|
| RP22104    | 4  |
| RP22106    | 6  |
| RP22108    | 8  |
| RP22110    | 10 |
| RP22112    | 12 |



Tapón Manguera

| Referencia | OD |
|------------|----|
| RP22204    | 4  |
| RP22206    | 6  |
| RP22208    | 8  |
| RP22210    | 10 |
| RP22212    | 12 |

RACORES



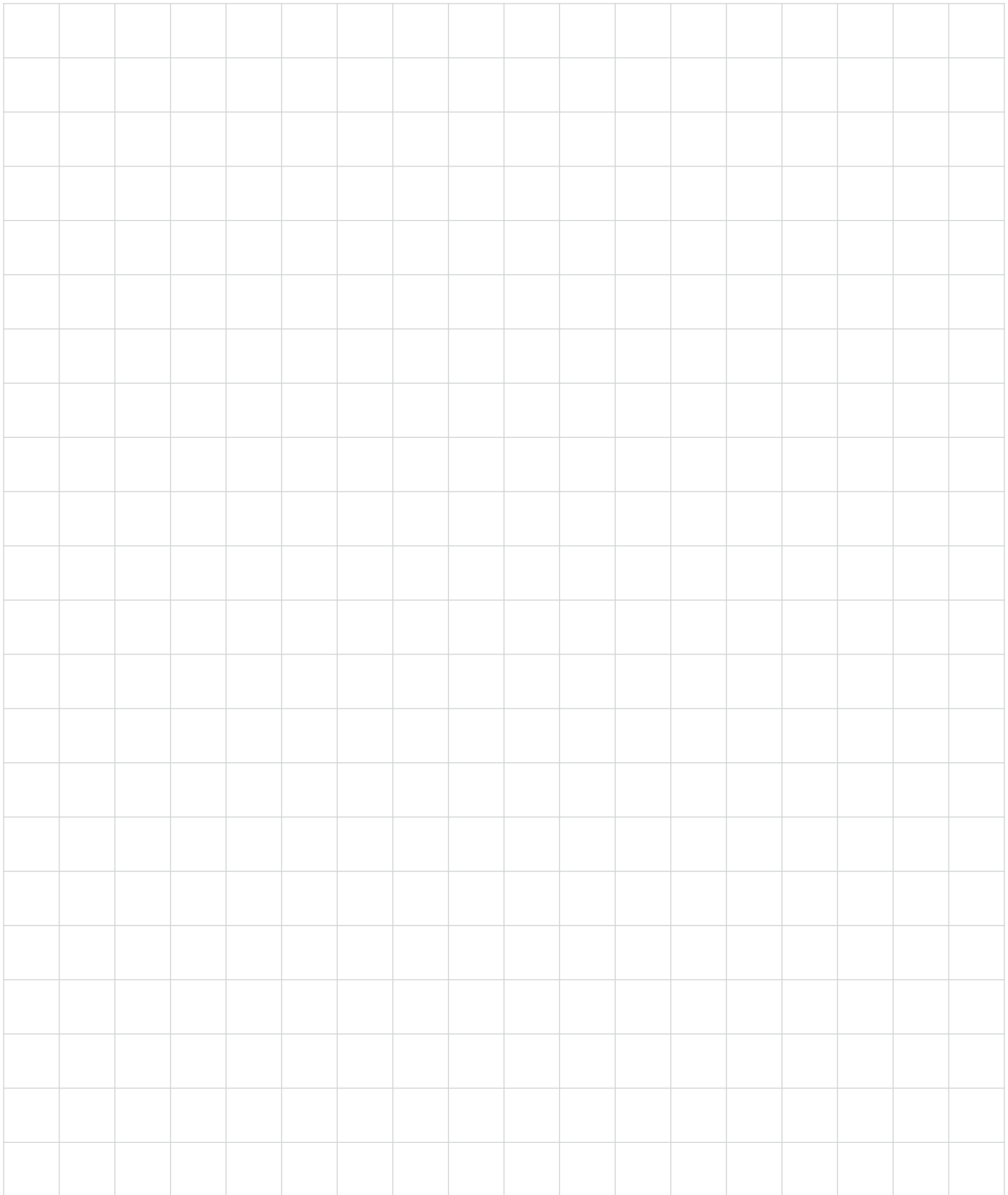
**Manifold- 4 Salidas**

| Referencia | G    | OD 1 | OD 2 |
|------------|------|------|------|
| RP2230208  | 1/4" | 8    | 6    |
| RP2230310  | 3/8" | 10   | 8    |



**Manifold- 6 Salidas**

| Referencia | G    | OD |
|------------|------|----|
| RP2240206  | 1/4" | 6  |
| RP2240308  | 3/8" | 8  |
| RP2240310  | 3/8" | 10 |



RACORES

## RACORES PLASTICOS - MILIMETRICOS - ROSCA PT (R)

SERIE RP , Rosca PT (R) Especiales para instalar en roscas NPT para usar mangueras milimétrica

**Ar.t**



### Racor Recto

| Referencia | PT (R) | OD |
|------------|--------|----|
| RP3020104  | 1/8"   | 4  |
| RP3020106  | 1/8"   | 6  |
| RP3020108  | 1/8"   | 8  |
| RP3020110  | 1/8"   | 10 |
| RP3020204  | 1/4"   | 4  |
| RP3020206  | 1/4"   | 6  |
| RP3020208  | 1/4"   | 8  |
| RP3020210  | 1/4"   | 10 |
| RP3020212  | 1/4"   | 12 |
| RP3020306  | 3/8"   | 6  |
| RP3020308  | 3/8"   | 8  |
| RP3020310  | 3/8"   | 10 |
| RP3020312  | 3/8"   | 12 |
| RP3020406  | 1/2"   | 6  |
| RP3020408  | 1/2"   | 8  |
| RP3020410  | 1/2"   | 10 |
| RP3020412  | 1/2"   | 12 |
| RP3020416  | 1/2"   | 16 |



### Racor Codo - Giratorio

| Referencia | PT (R) | OD |
|------------|--------|----|
| RP3040104  | 1/8"   | 4  |
| RP3040106  | 1/8"   | 6  |
| RP3040108  | 1/8"   | 8  |
| RP3040110  | 1/8"   | 10 |
| RP3040112  | 1/8"   | 12 |
| RP3040204  | 1/4"   | 4  |
| RP3040206  | 1/4"   | 6  |
| RP3040208  | 1/4"   | 8  |
| RP3040210  | 1/4"   | 10 |
| RP3040212  | 1/4"   | 12 |
| RP3040306  | 3/8"   | 6  |
| RP3040308  | 3/8"   | 8  |
| RP3040310  | 3/8"   | 10 |
| RP3040312  | 3/8"   | 12 |
| RP3040406  | 1/2"   | 6  |
| RP3040408  | 1/2"   | 8  |
| RP3040410  | 1/2"   | 10 |
| RP3040412  | 1/2"   | 12 |
| RP3040416  | 1/2"   | 16 |



### Racor Tee Horizontal- Giratorio

| Referencia | PT (R) | OD |
|------------|--------|----|
| RP3090104  | 1/8"   | 4  |
| RP3090106  | 1/8"   | 6  |
| RP3090108  | 1/8"   | 8  |
| RP3090204  | 1/4"   | 4  |
| RP3090206  | 1/4"   | 6  |
| RP3090208  | 1/4"   | 8  |
| RP3090210  | 1/4"   | 10 |
| RP3090306  | 3/8"   | 6  |
| RP3090308  | 3/8"   | 8  |
| RP3090310  | 3/8"   | 10 |
| RP3090312  | 3/8"   | 12 |
| RP3090410  | 1/2"   | 10 |
| RP3090412  | 1/2"   | 12 |
| RP3090416  | 1/2"   | 16 |



### Racor Yee- Giratorio

| Referencia | PT (R) | OD |
|------------|--------|----|
| RP3100106  | 1/8"   | 6  |
| RP3100206  | 1/4"   | 6  |
| RP3100208  | 1/4"   | 8  |
| RP3100310  | 3/8"   | 10 |





## Racor Recto - Azul

| Referencia | R    | OD |
|------------|------|----|
| RRP2020106 | 1/8" | 6  |
| RRP2020108 | 1/8" | 8  |
| RRP2020206 | 1/4" | 6  |
| RRP2020208 | 1/4" | 8  |
| RRP2020210 | 1/4" | 10 |
| RRP2020212 | 1/4" | 12 |
| RRP2020308 | 3/8" | 8  |
| RRP2020310 | 3/8" | 10 |
| RRP2020312 | 3/8" | 12 |
| RRP2020412 | 1/2" | 12 |

## Características

- El mecanismo de la tuerca de fijación proporciona una conexión neumática semipermanente
- Resistente a la vibración y a los movimientos multidireccionales de la tubería
- Buena tolerancia a la contaminación, la corrosión y químicos
- Composición plástica no magnética



## Racor Codo - Azul

| Referencia | R    | OD |
|------------|------|----|
| RRP2040106 | 1/8" | 6  |
| RRP2040108 | 1/8" | 8  |
| RRP2040206 | 1/4" | 6  |
| RRP2040208 | 1/4" | 8  |
| RRP2040210 | 1/4" | 10 |
| RRP2040212 | 1/4" | 12 |
| RRP2040308 | 3/8" | 8  |
| RRP2040310 | 3/8" | 10 |
| RRP2040312 | 3/8" | 12 |
| RRP2040412 | 1/2" | 12 |

## Datos Técnicos

Fluido:  
Aire comprimido y vacío

Presión de Trabajo:  
-1 a 10 Bar ~ -14,7 a 150 PSI

Temperatura de Trabajo:  
0°C a 60°C ~ 32°F a 140°F



## Unión Tee - Azul

| Referencia | OD |
|------------|----|
| RRP21306   | 6  |
| RRP21308   | 8  |
| RRP21310   | 10 |
| RRP21312   | 12 |

# RACOR CON DETENCION - TIPO ACOPLE RAPIDO

SERIE RD - MILIMETRICOS Y EN PULGADAS

Art



## Características

- El aire es completamente bloqueado al retirar la manguera
- Excelente sujeción de las mangueras
- Ideal para puntos donde se requiere la conexión y desconexión frecuentes
- Satisfacen las características de anti-contaminación



## En Pulgadas

| Referencia | NPT  | OD    |
|------------|------|-------|
| RD1020102  | 1/8" | 1/4"  |
| RD1020202  | 1/4" | 1/4"  |
| RD1020209  | 1/4" | 5/16" |
| RD1020303  | 3/8" | 3/8"  |

## Datos Técnicos

Fluido:  
Aire comprimido

Presión de Trabajo:  
-1 a 10 Bar ~ -14,7 a 150 PSI

Temperatura de Trabajo:  
0°C a 60°C ~ 32°F a 140°F

Roscas:  
Pulgadas - NPT  
Milimétricos - G



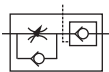
## Milimétricos

| Referencia | G    | OD |
|------------|------|----|
| RD2020104  | 1/8" | 4  |
| RD2020106  | 1/8" | 6  |
| RD2020206  | 1/4" | 6  |
| RD2020208  | 1/4" | 8  |

## Materiales

Cuerpo : Bronce Niquelado

Empaques : NBR



## Características

- Garantizan la parada intermedia de un cilindro al bloquear la salida del aire
- Permiten controlar una velocidad constante del cilindro fácilmente
- Con un sistema de bloqueo para evitar manipulaciones no deseadas
- Fácil instalación al fijarlos directamente a las conexiones del cilindro
- Regulación de la velocidad en un solo sentido

## Milimétricos

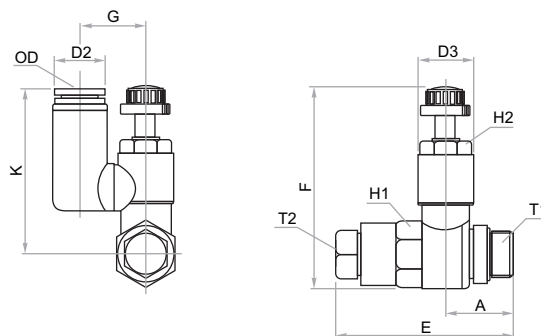
| Referencia | G    | OD |
|------------|------|----|
| RPC10106   | 1/8" | 6  |
| RPC10206   | 1/4" | 6  |
| RPC10208   | 1/4" | 8  |
| RPC10308   | 3/8" | 8  |
| RPC10310   | 3/8" | 10 |

## Datos Técnicos

Fluido:  
Aire comprimido

Presión de Trabajo:  
-1 a 10 Bar ~ -14,7 a 150 PSI

Temperatura de Trabajo:  
0°C a 60°C ~ 32°F a 140°F

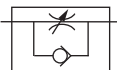


| Referencia | OD | A    | D2   | D3   | E    | F    |
|------------|----|------|------|------|------|------|
| RPC10106   | 6  | 16,0 | 12,6 | 12,1 | 35,4 | 48,4 |
| RPC10206   | 6  | 18,1 | 12,6 | 15,4 | 42,0 | 60,4 |
| RPC10208   | 8  | 18,1 | 14,9 | 15,4 | 42,0 | 60,4 |
| RPC10308   | 8  | 21,0 | 15,1 | 20,3 | 49,7 | 63,4 |
| RPC10310   | 10 | 21,0 | 17,6 | 20,3 | 49,7 | 63,4 |

| Referencia | G    | H1 | H2 | K    | T1    | T2    |
|------------|------|----|----|------|-------|-------|
| RPC10106   | 16,1 | 12 | 10 | 38,9 | G 1/8 | M5    |
| RPC10206   | 19,4 | 17 | 13 | 44,3 | G 1/4 | G 1/8 |
| RPC10208   | 18,4 | 17 | 13 | 46,7 | G 1/4 | G 1/8 |
| RPC10308   | 23,4 | 19 | 17 | 50,7 | G 3/8 | G 1/8 |
| RPC10310   | 23,4 | 19 | 17 | 53,0 | G 3/8 | G 1/8 |

## Materiales

Cuerpo : PBT  
Perilla : Bronce Niquelado  
Empaques : NBR



## Características

- Permiten controlar una velocidad constante del cilindro fácilmente
- Con un sistema de bloqueo para evitar manipulaciones no deseadas
- Fácil instalación al fijarlos directamente a las conexiones del cilindro
- Regulación de la velocidad en un solo sentido

## Control de Flujo en Pulgadas

| Código    | NPT  | OD   | Flujo l/min. |
|-----------|------|------|--------------|
| RP1010102 | 1/8" | 1/4" | 350          |
| RP1010202 | 1/4" | 1/4" | 600          |
| RP1010203 | 1/4" | 3/8" | 640          |
| RP1010302 | 3/8" | 1/4" | 1.100        |
| RP1010303 | 3/8" | 3/8" | 1.100        |
| RP1010304 | 3/8" | 1/2" | 1.100        |
| RP1010403 | 1/2" | 3/8" | 1.100        |
| RP1010404 | 1/2" | 1/2" | 1.700        |

## Datos Técnicos

Fluido:  
Aire comprimido

Presión de Trabajo:  
-1 a 10 Bar ~ -14,7 a 150 PSI

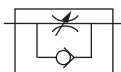
Temperatura de Trabajo:  
0°C a 60°C ~ 32°F a 140°F

## Control de Flujo Milimetrico

| Código    | Rosca G | OD | Flujo l/min. |
|-----------|---------|----|--------------|
| RP201M504 | M5      | 4  | 100          |
| RP201M506 | M5      | 6  | 100          |
| RP2010106 | 1/8"    | 6  | 350          |
| RP2010108 | 1/8"    | 8  | 350          |
| RP2010206 | 1/4"    | 6  | 600          |
| RP2010208 | 1/4"    | 8  | 640          |
| RP2010210 | 1/4"    | 10 | 640          |
| RP2010306 | 3/8"    | 6  | 1.100        |
| RP2010308 | 3/8"    | 8  | 1.100        |
| RP2010310 | 3/8"    | 10 | 1.100        |
| RP2010312 | 3/8"    | 12 | 1.100        |
| RP2010412 | 1/2"    | 10 | 1.700        |
| RP2010412 | 1/2"    | 12 | 1.700        |

## Materiales

Cuerpo : PBT  
Perilla : Bronce Niquelado  
Empaques : NBR



Estos controles son especiales para instalar en roscas NPT para usar mangueras milimétricas



## Características

- Permiten controlar una velocidad constante del cilindro fácilmente
- Con un sistema de bloqueo para evitar manipulaciones no deseadas
- Fácil instalación al fijarlos directamente a las conexiones del cilindro
- Regulación de la velocidad en un solo sentido

## Control de Flujo Milimetrico - Rosca PT(R)

| Código    | PT (R) | OD | Flujo l/min. |
|-----------|--------|----|--------------|
| RP3010106 | 1/8"   | 6  | 350          |
| RP3010108 | 1/8"   | 8  | 350          |
| RP3010206 | 1/4"   | 6  | 600          |
| RP3010208 | 1/4"   | 8  | 640          |
| RP3010210 | 1/4"   | 10 | 640          |
| RP3010306 | 3/8"   | 6  | 1.100        |
| RP3010308 | 3/8"   | 8  | 1.100        |
| RP3010310 | 3/8"   | 10 | 1.100        |
| RP3010312 | 3/8"   | 12 | 1.100        |
| RP3010410 | 1/2"   | 10 | 1.700        |
| RP3010412 | 1/2"   | 12 | 1.700        |

## Datos Técnicos

Fluido:  
Aire comprimido

Presión de Trabajo:  
Roca PT  
-1 a 10 Bar ~ -14,7 a 150 PSI

Temperatura de Trabajo  
Rosca G:  
-20°C a 80°C

Control de  
Flujo Metálico



## Control de Flujo Milimetrico - Rosca G

| Referencia | Rosca G | OD    | Flujo l/min. |
|------------|---------|-------|--------------|
| RM201M504  | M5      | 4 mm  | 42           |
| RM201M506  | M5      | 6 mm  | 42           |
| RM2010106  | 1/8"    | 6 mm  | 160          |
| RM2010108  | 1/8"    | 8 mm  | 160          |
| RM2010206  | 1/4"    | 6 mm  | 400          |
| RM2010208  | 1/4"    | 8 mm  | 400          |
| RM2010210  | 1/4"    | 10 mm | 400          |
| RM2010308  | 3/8"    | 8 mm  | 1.000        |
| RM2010310  | 3/8"    | 10 mm | 1.000        |
| RM2010412  | 1/2"    | 12 mm | 1.300        |

## Materiales

Cuerpo : PBT  
Perilla : Bronce Niquelado  
Empaques : NBR

